

# INSTALLATION and OPERATING INSTRUCTIONS

## SCHROTH Static Harness Belts

For detailed information see [www.schroth.com](http://www.schroth.com)



Safety  
through  
Technology

Edition 11/2020  
Part No.: EA 2.3

<b>Installation and Operating Instructions</b>	01 – 19
Questions about Installation	01 – 03
Package Contents	04
Installation	05 – 12
Operating	13 – 16
Care and Maintenance	17 – 18
Address and Copyright	19

**Certified Vehicle List** [Vehicle Reference List] *yellow pages*

This manual contains important information as well as DANGERS, WARNINGS, CAUTIONS and NOTES regarding the proper installation, effective use and maintenance of the SCHROTH harness belt. Heed all Warnings and Cautions. Follow all instructions and Notes.

Always keep this manual in your car for reference and be sure to leave it with the car if you sell the car with the harness belt system installed. If you lose the manual please see [www.schroth.com](http://www.schroth.com).



Always read and follow this manual and its instructions carefully.

- Rallye 3 asm
- Rallye 4 asm
- Rallye Cross asm

**INSTALLATION and OPERATING  
INSTRUCTIONS**

Belt-type: **Rallye 3 asm** Reg.-Number: Se E<sub>1</sub> 0439003  
 Belt-type: **Rallye 4 asm** Reg.-Number: Se E<sub>13</sub> 049530  
 Belt-type: **Rallye Cross asm** Reg.-Number: Se E<sub>4</sub> 0420110

Made in Germany

Made in Germany by:

**SCHROTH Safety Products GmbH**  
 Im Ohl 14  
 D-59757 Arnsberg  
 Tel.: +49-2932-9742-0  
 Fax: +49-2932-974242

Imported by:

**HMS Motorsports, Ltd.**  
 119 Bevan Drive  
 Mooresville, NC 28115  
 Tel.: +1-978-774-1640  
 Fax: +1-978-774-1548

2. Are there openings between the backrest and the headrest of the seat? [See illustrations below.]

YES  NO

**WARNING**

**Risk of severe injuries or death.**

**SCHROTH harness belts will function properly only when installed in vehicles equipped with seats having a headrest or backrests with seatbelt openings in an integrated headrest. Otherwise the shoulder belts will slide off occupant's shoulders during an accident. Never modify factory seats to create new slots. The seat structure may be impaired or sharp edges of the seat frame may damage the racing harness webbing.**

min. 120mm    min. 75mm

right    right    right    wrong    wrong

3. If you intend to install the tail straps of the SCHROTH harness belt system at the rear seat lap belt anchor point (Rallye 4 and Rallye Cross always must be installed there),

a. have you made sure that the Certified Vehicle List (Vehicle Reference List) allows or requires you to do so?

YES  NO

b. is your vehicle equipped with a SCHROTH approved seat? [see Certified Vehicle List (Vehicle Reference List) and Legend on yellow pages]

YES  NO

**WARNING**

**Risk of serious personal injury or death.**

**Restraint systems can only offer protection if they are properly installed and used. To assure proper function, your car must meet special technical requirements. Before installation of a SCHROTH harness belt, please answer a few very important questions to make sure the SCHROTH harness belt system can be properly installed and effectively used in your car.**

If you answer any question with [NO], do NOT install the SCHROTH harness belt system.

1. Is your vehicle listed in the Vehicle Reference List? (See [www.schroth.com](http://www.schroth.com))

Compare your car's specifications to the Make, Type No. and Model Year of vehicle in the Vehicle Reference List.

YES  NO

**WARNING**

**Risk of serious personal injury or death.**

**Proper harness belt geometry requires that seat belt anchor points be located within narrowly defined areas. Install SCHROTH harness belts only in SCHROTH approved vehicles for which proper anchorage location and belt geometry has been determined to exist.**

**WARNING**

**Risk of serious personal injury or death. Never install the SCHROTH harness belt at these lower anchor points unless it is used with an approved seat. [See index in Certified Vehicle List (Vehicle Reference List), also available on [www.schroth.com](http://www.schroth.com).]**

4. Do you have the correct belt for the left respectively right side? (See illustrations on page 5.)

YES  NO

**WARNING**

**Risk of severe head injury or death during rebound phase of frontal collision! Install harness belts on the correct side of vehicle. Left and right belts are not interchangeable! Make sure black asm-cartridge is on inboard strap, see illustrations on page 5.**

5. For certain vehicles special mounting accessories are required. [See Certified Vehicle List (Vehicle Reference List), also available on [www.schroth.com](http://www.schroth.com).]

If required for your vehicle: do you now have them available for installation?

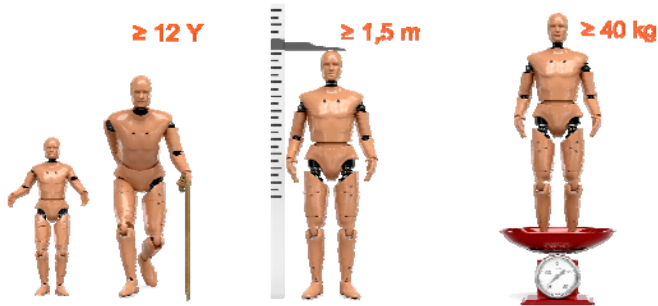
YES  NO

**! WARNING**

**Risk of serious injury or death!**

**Do not allow cargo or a folding rear seat to interfere with or misdirect the harness belt tail strap.**

This SCHROTH asm harness belt is only suitable for adults on front outboard seating positions.



**SAFETY INSTRUCTIONS**

SCHROTH asm harnessbelts are designed to be installed in addition to the stock restraint system. Always heed Country/State laws governing the wearing of seat belts.

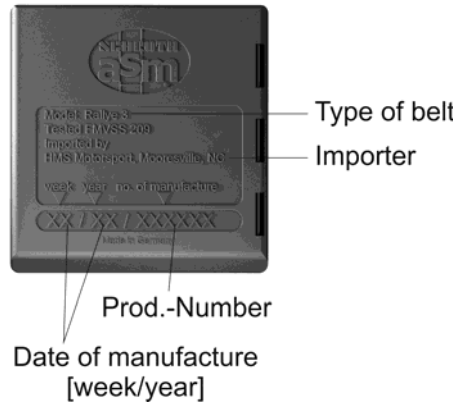
SCHROTH U.S. model harnessbelts have been tested in accordance with performance parameters of Federal Motor Vehicle Safety [FMVSS] Standard 209 with the exception of Paragraph S 4.6 (full scale impact testing as described in FMVSS 208). FMVSS 209 deals with lap and three point restraints and does not expressly refer to harness belts. SCHROTH has nevertheless applied the performance criteria specified in FMVSS 209 to the system to the extent applicable.

These belts, when properly installed and used according to applicable instructions can mitigate injury. The ability of any restraint system to mitigate or prevent injury is directly related to the type and severity of the accident. SCHROTH asm harnessbelts have been tested in dynamic sled tests utilizing a 75 kg (165 lbs) Hybrid II anthropometric dummy to simulate head-on collisions at 50 km/h (31 mph). They also have been dynamically tested utilizing a 75 kg mass dummy in accordance with European Safety Standard ECE-R 16.04.

**SAFETY INSTRUCTIONS**

Always keep this manual in the vehicle so that others can thoroughly familiarize themselves with the proper use of the system.

**PACKAGE CONTENTS**



**Installation hardware**



1x



1x

**Rallye 3/3J asm**

- 1x 7/16", 38 mm
- 2x 7/16", 25 mm
- 1x spacer sleeve
- 1x spacer sleeve
- 3x spring washer

**Rallye 3 asm**



**Rallye 4 / Cross asm**

- 1x 7/16", 38 mm
- 3x 7/16", 25 mm
- 4x spring washer

**Rallye 4 asm**



**Rallye Cross asm (wrap around)**

- 2x 7/16", 25 mm
- 2x spring washer

**Rallye Cross asm (wrap around)**



**Rallye Cross asm (bolt in)**



# INSTALLATION

## 1 General Instructions

Only install Rallye Cross if rear seat occupation is not intended at any time. The crossing shoulder straps restrict the rear seat capacity because the tail straps cannot be released.

Heed all WARNINGS !

WARNING

**Risk of severe injuries or death. On 2-door vehicles the folding front seat backrests will be restricted in their range of motion. Evacuation or rescue of rear seat passenger can be restricted or even impossible after an accident. Do not transport rear seat passengers in 2-door vehicles while harness belt is installed.**

Always leave original equipment seat belts in place and available for use.



Removal of original equipment restraint systems may also violate applicable State or Federal law.

WARNING

**Risk of severe head injury or death during rebound phase of frontal collision!**

Separate SCHROTH asm harness belts are supplied for the left and right sides. Install harness belts on the correct side of vehicle. Left and right belts are not interchangeable! Make sure black asm-cartridge is on inboard strap, see illustrations below.



left harness belt



right harness belt

WARNING

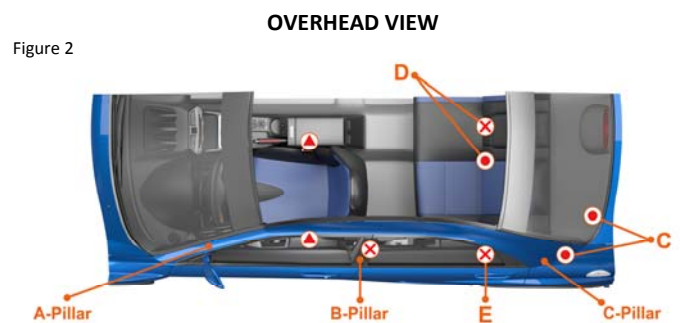
**Risk of severe personal injury or death in an accident. Use of improper attachment points will impair system performance. Inappropriate or weak tail strap anchor points will not withstand the forces in an accident.**

- Never attach the tail straps/shoulder belts to anchorages intended for the fixation of child seats (ISOFIX, LUAS, LATCH, UCS55 or CANFIX), found on the filler panels behind the rear seats of some passenger cars or the luggage area of some hatchbacks or station wagons. These child seat anchor points are not strong enough to withstand the forces of an accident and are not intended for adult safety belts.
- Install harness belt systems only at suitable anchor points for seat belt systems as originally installed by the vehicle manufacturer.
- For suitable anchor points for make, model and model year of your vehicle, see Certified Vehicle List (Vehicle Reference List, also available on [www.schroth.com](http://www.schroth.com))  
If in doubt, ask your dealer for assistance.

These figures show the general location and suitabilities of seat belt anchor points installed as standard equipment in passenger cars. [also see [www.schroth.com](http://www.schroth.com)]

### Rallye 3 only:

- Not suitable for attachment of a SCHROTH Rallye 3.
- Must be used for the attachment of the lap belt portion of the harness belt.
- Suitability for tail strap anchorage of Rallye 3 depends upon the specific make, model and model year of the vehicle. Never install the tail strap at the anchor point "D" unless it is used with an approved seat. [See index in Certified Vehicle List (Vehicle Reference List), also available on [www.schroth.com](http://www.schroth.com).]



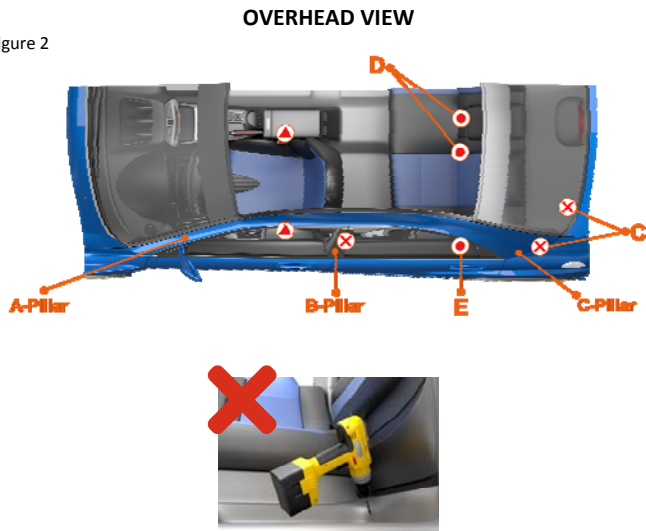
**Rallye 4 and Rallye Cross only:**

- ⊗ Not suitable for attachment of a SCHROTH Rallye 4 and Rallye Cross.
- ⚠ Must be used for the attachment of the lap belt portion of the harness belt.
- ⊙ Suitability for tail strap anchorage of Rallye 4 and Rallye Cross depends upon the specific make, model and model year of the vehicle. Never install the harness belt unless it is used with an approved seat. [See index in Certified Vehicle List (Vehicle Reference List), also available on [www.schroth.com](http://www.schroth.com).]

Figure 1



Figure 2



**2 Anchorage bolts**

Bolts used to attach original equipment seatbelts may be used to attach the SCHROTH asm harnessbelt but only if they are long enough. You must be able to tighten each bolt a minimum of nine (9) full 360 degree turns. If the bolt is too short, choose one of the SCHROTH supplied bolts. (Read and observe the following Warning!)

**! WARNING**

A bolt which sticks out too far might damage the chassis, the fuel tank, fuel lines, brake lines or other important vehicle components.

Make sure enough space is available behind the thread before screwing in the 1½ inch (38 mm) long bolt.

Tightening torque for all bolts: 30 ftlbs (40 Nm)

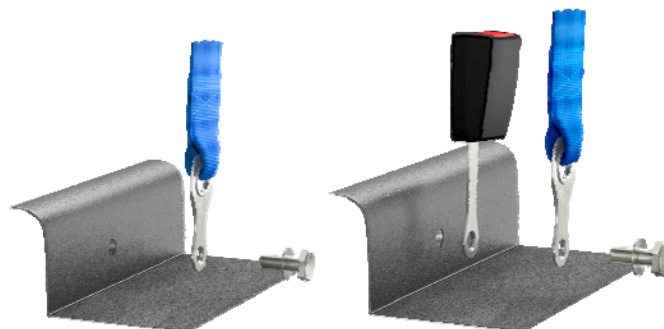
**3 Installation of the lap belt**



When mounting the lap belt in a car equipped with a racing seat and integrated (non adjustable) headrests thread the belt through the openings as illustrated.

**3.2 Installation locations**

at the center tunnel



**! WARNING**

**Risk of severe injuries or death.**

Never drill or tap or make a new attachment point in the body or chassis in order to mount a SCHROTH harness at that location. Such attachment points are inadequate, may be improperly located and can seriously impair the function and effectiveness of the system.

Please compare the possible mounting locations on your car with the illustrations on pages 6/7 and pick the suitable one you want to use. [See index in Certified Vehicle List (Vehicle Reference List), also available on [www.schroth.com](http://www.schroth.com).]

Original equipment belts with swivel attachments must never be bent, modified, impeded or restricted in their range of motion.

# ! WARNING

Risk of serious personal injury or death.

Damage will impair the effectiveness of the harness belt system!

Make sure that the seat and bracket are positioned so that moving parts of the seat or adjustment mechanisms cannot contact or damage the webbing of the lap belt.

(See paragraph 4 below, Flexible range of the seat belt mounting brackets.)

at the seat



on the seat sliding bracket

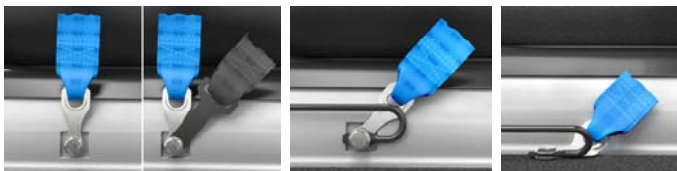


Mounting point on sliding anchor point on the seat bracket of seat with height adjustment.



Illustration shows AUDI/VW installation.

3.3at the door sill



Use the foremost anchor point of the sliding bar of the stock 3-point belt.

## 4 Flexible range of the seat belt mounting brackets

# ! WARNING

Risk of severe injuries or death.

Repeated bending could weaken the bracket and cause it to fail when loaded in an accident.

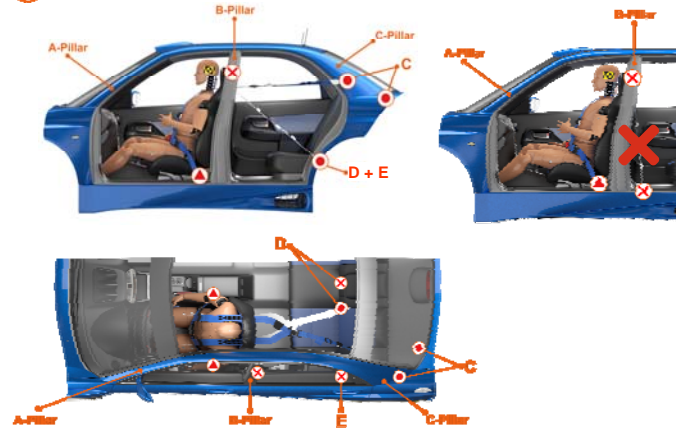
Never bend the bracket back and forth several times.



## 5 Installation of tail straps

### Rallye 3

- Positions of suitable anchor points
- ⊗ anchor points are not suitable



If Rallye 3 tail strap is installed at anchor point "C"

If necessary open panel covering at anchor point "C" use spacer sleeve.



Installation if vehicle is equipped with stock 3-point belts for rear seats.

Installation if vehicle is not equipped with stock 3-point belts for rear seats.

# ! CAUTION

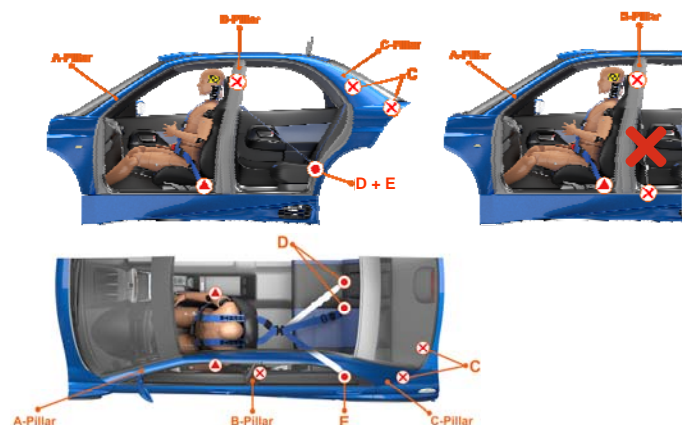
Risk of minor or moderate injury.

The tail strap

1. must be installed at a sufficient distance from the stock 3-point belt swivel attachment so the range of motion of the stock belt is not restricted.
2. must be positioned in direction of the pull of tail strap when the belt is worn.

### Rallye 4 and Rallye Cross

- Positions of suitable anchor points
- ⊗ anchor points are not suitable



If tail straps are installed at anchor point "D"

**! WARNING**

Risk of serious personal injury or death.  
 Install only with an approved seat. Never install the harness belt at the lower anchor point "D" unless it is used with an approved seat.  
 (see index in Vehicle Reference List [www.schroth.com](http://www.schroth.com))



Installation **with** stock belts for rear seats.



Installation **without** stock belts for rear seats.

Never remove seat belts supplied as original equipment with your car.

If tail straps are installed at anchor point "E"

[see index in Certified Vehicle List (Vehicle Reference List), also available on [www.schroth.com](http://www.schroth.com)]



Installation **with** stock belts for rear seats.

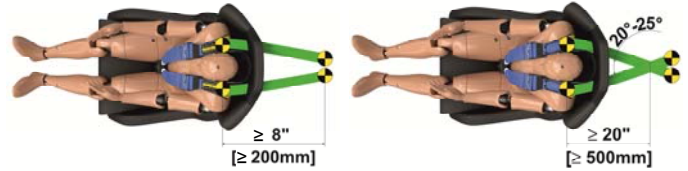


Installation **without** stock belts for rear seats.

Wrap-around attachment to a therefore intended lateral bar.

**! WARNING**

Risk of serious personal injury or death.  
 Non-certified bars may be too weak to withstand the forces applied to them during an accident. Use only roll cage bars to mount the shoulder belts that are certified by the roll cage manufacturer for such use.



The straps strictly must be wrapped and looped as instructed as follows.

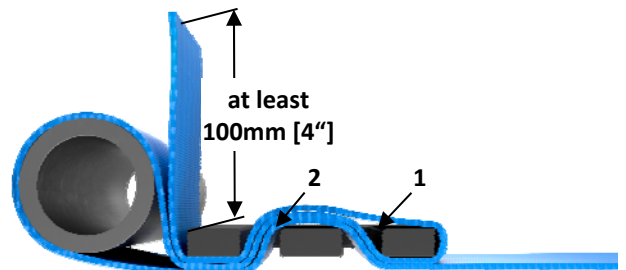
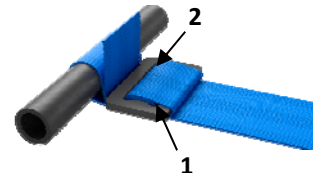
**! WARNING**

Risk of severe injuries or death.  
 Follow all instructions for Wrap Systems. Avoid slack in the system. 3-bar slides incorrectly wrapped or wrapped too far away from the roll cage bar may allow webbing to slide during an accident. Slippage or elongation will occur which may reduce the effectiveness of the harness belt. Shoulder belts will give extra travel allowing possible head and chest impact into the steering wheel.  
**The webbing must be wrapped tightly!**  
 Never install a lap belt directly to a roll cage using the wrap around technique.

1. Slide the webbing through slot 1 and 2 as shown



2. Make sure the strap end protrudes at least 100 mm [4"] or even longer from slot 2. If it is less than 100 mm [4"] disassemble and start over again. If longer, roll in the strap end and fix it by a cable tie to the shoulder belt.



3. Check again for proper shoulder belt tilt lock adjuster positioning and for the 3-bar slide to be as close as possible to the roll cage bar or end bracket.

## OPERATING and USE

# ! WARNING

Improper use of any seatbelt can cause serious personal injury or death.

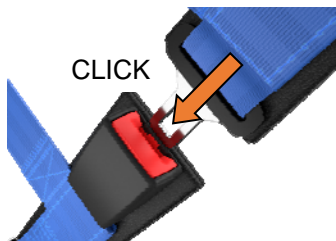
To help reduce the risk of serious injury in an accident:

- \* Never strap more than one person in place, with each harness system.
- \* Never wear the harness system at the same time as the original equipment seat belts.
- \* Never use the lap belt portion of the harness system without the shoulder belts.
- \* Always make sure that lap belt and shoulder belts are not twisted when worn.
- \* Never use the harness belt system for children under the age of 12 years or to install an infant seat or child seat.
- \* Never use the harness belt system for persons who weigh less than 40 kg [88 lbs] or those who are less than 1.50 m [4'11"] tall, regardless of age.
- \* Always wear the lap belt portion of the harness system low and tight across the pelvis. This is also recommended for the stock 3-point belt whenever it is worn.
- \* Never wear the belts over heavy clothing as it can interfere with proper positioning and adjustment of the belts, reducing the overall effectiveness of the system.
- \* Never wear the belts over rigid or breakable objects in or on your clothing, such as eye glasses, pens, jewelry keys etc. as these may cause injury.
- \* Never allow lap or shoulder belts to rub against sharp objects.
- \* Never allow the belts to be damaged by becoming caught in door or seat hardware.

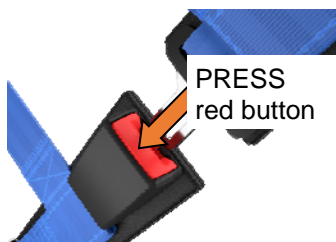
### 4 How to close and release the buckles

#### 4.1 Lap belt buckle

to close

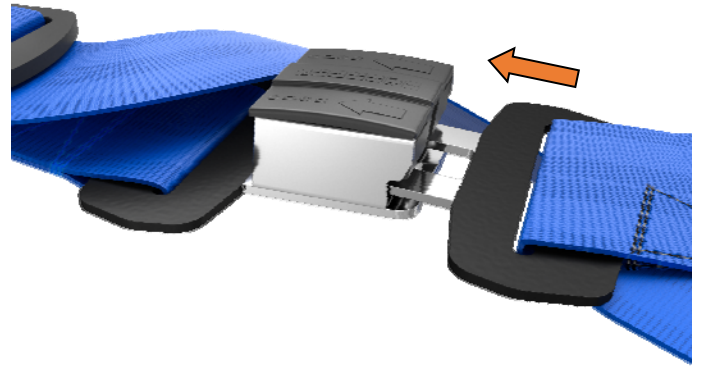


to open

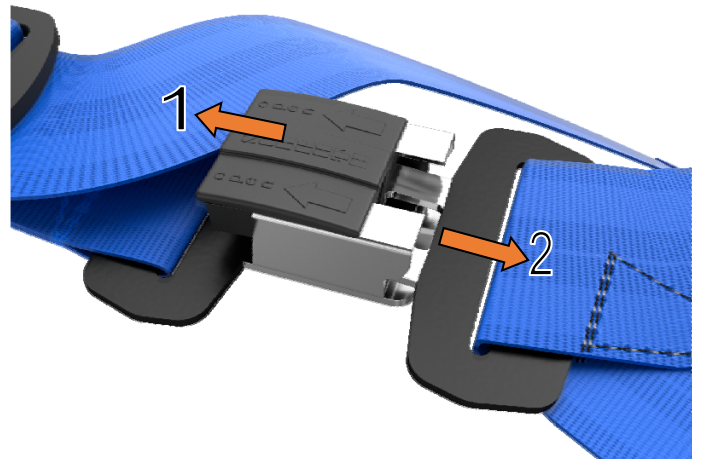


#### 4.2 Buckle between tail strap and shoulder belts (separation buckle). Refers to Rallye 3 and Rallye 4 models only.

To close:

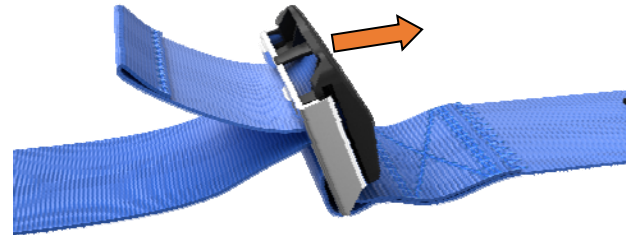


To open:



### 5 How to adjust the belt

#### 5.1 to lengthen the belt



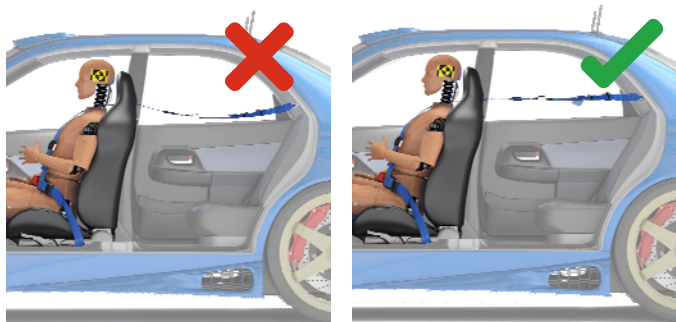
#### 5.2 to tighten the belt



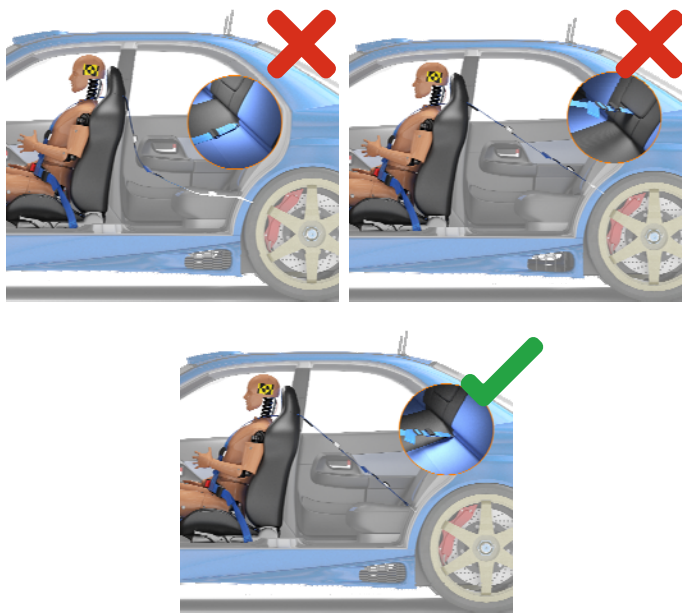


6 Adjustment of the headrest and initial adjustment of the tail straps

6.1 Tail straps installed at anchor point "C"



6.2 Tail straps installed at anchor point "D"



7 Putting on the belt

- a) After choosing the correct seating position, put the belt on and adjust the lap belt so it fits tightly in the bend between the pelvic crest and the upper thigh. The release buckle should be located in the center in front of your body.



close buckle

tighten lap belt

WRONG

Next step is to tighten the shoulder belts, see 7 b)

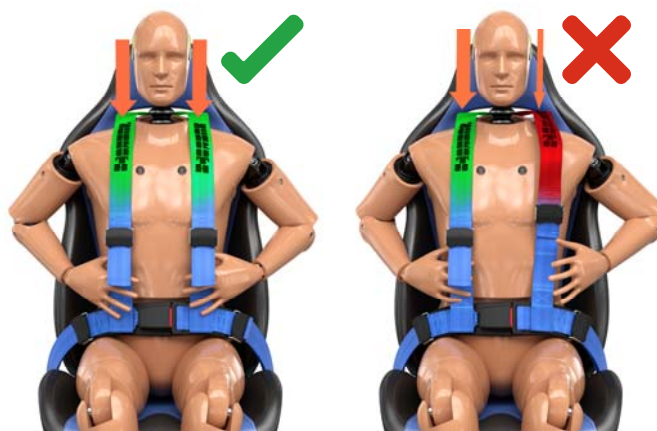
# ! WARNING

Improper fit of any lap belt can cause serious personal injury or death.

- \* ALWAYS make sure that the lap belt is tightly adjusted. A lap belt in a harness or 3-point system which is too loose will impair the performance of the system.
- \* The lap belt must fit tightly in the bend between the pelvic crest and the upper thigh!
- \* Make sure belt is properly adjusted when a different person uses the belt or each time the seat is readjusted.

(Heed WARNING on adjuster.)

- b) Adjust the length of the shoulder belts until both belts exert equal pressure against the upper torso.

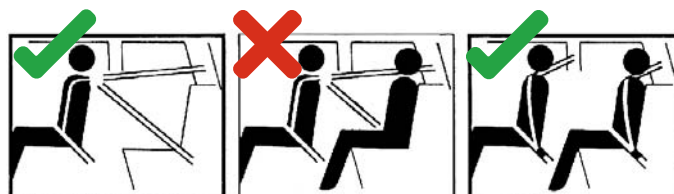


8 Use of the rear seats

# ! WARNING

Risk of severe injuries or death.

Never wear the SCHROTH harnessbelt if any rear seating position is occupied. Both front seat occupants must then use original equipment 3-point belts. The rear seat occupant could interact with the tail strap of the SCHROTH harnessbelt during an accident and cause serious injury to himself or to the wearer of the harness belt.

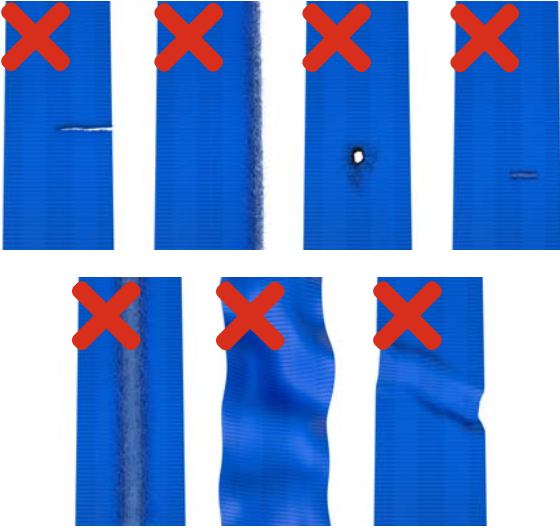


## CARE and MAINTENANCE

### 1. Inspection

Check the safety belt once a month for any damage. Cuts, tears and other damage to the belt will greatly reduce its effectiveness. Replace the belt or damaged parts immediately with original spare parts (see page Spare Parts on [www.schroth.com](http://www.schroth.com)). Never use a damaged harness belt, use the standard 3-point belts which remain available for use.

Make sure the buckles are free of any obstruction and lock securely.



### 2 Accident

**! WARNING**

Risk of serious personal injury or death.  
A safety belt used during an accident has been weakened and must be replaced!!

**! WARNING**

Risk of serious personal injury or death.  
A restitched asm seam is dangerous.  
DO NOT restitch an energy conversion device under any circumstances.

After an accident, in addition to replacing seatbelts which were in use, also ask your car dealer to carefully check all seatbelts attachment points for deformation or cracks. Always make sure the car manufacturer's guidelines are followed if a repair is necessary.

**! WARNING**

Risk of serious injuries or death.

Modified or damaged belts, or belts that have been re sewn, are not strong enough and are dangerous in an accident.

Never modify, disassemble or repair the belts yourself.

For parts that can be replaced, use only original SCHROTH spare parts.

Use only original SCHROTH accessories with the harness belt system.

Use of non-authorized parts and accessories can reduce the effectiveness of the harness belt system.

**! WARNING**

Risk of serious injuries or death.

Never use any restraint system which does not operate properly.

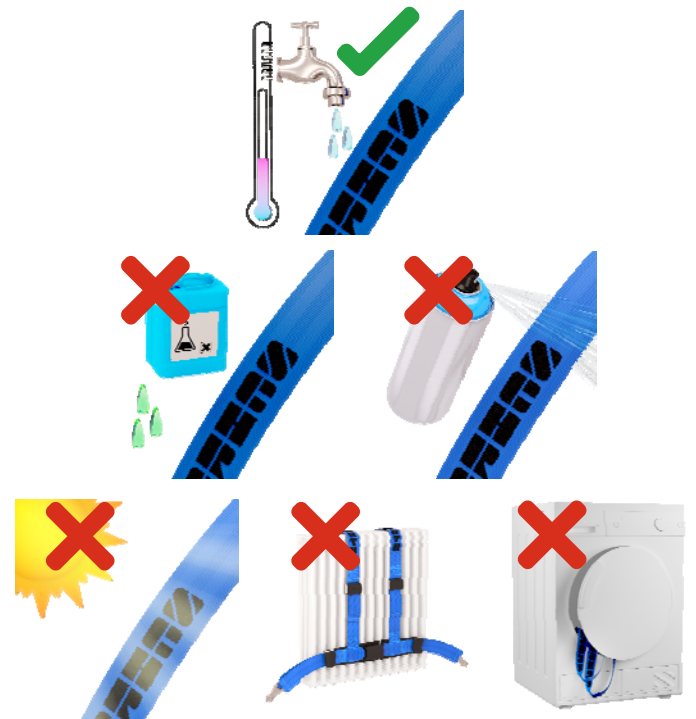
If questions arise, immediately contact your importer or the manufacturer!

### 3 Cleaning

**! WARNING**

Risk of serious injuries or death.

Improper cleaning or drying of the harness belts can weaken them or reduce their effectiveness. Use only clean supplies and methods as recommended at [www.schroth.com](http://www.schroth.com)



## INSTALLATION ACCESSORIES

see [www.schroth.com](http://www.schroth.com)

## SPARE PARTS

see [www.schroth.com](http://www.schroth.com)

## ADDRESS OF IMPORTER

### HMS MOTORSPORT, LTD.

119 Bevan Drive  
Mooresville, NC 28115  
USA

Phone: +1-978-774-1640

FAX: +1-978-774-1548

eMail: [schroth@hmsmotorsport.com](mailto:schroth@hmsmotorsport.com)

[www.hmsmotorsport.com](http://www.hmsmotorsport.com)

Our Service Number

**800- 884 – BELT**

will direct you to your nearest dealer

SCHROTH® reserve the right to incorporate any technical changes or further development in its products without notice.

Our website will inform you about actual instructions and products.

If you need additional information or have any comments or questions about the SCHROTH asm harnessbelts, please contact [germany@schroth.com](mailto:germany@schroth.com)

## REMEMBER:

**For safety`s sake, always buckle up.**

The copyrights for this "Installation and Operating Instructions" are property of SCHROTH Safety Products GmbH, Germany.

Any form of reproduction of this manual, either in whole or in part, is permitted only with the express written consent of SCHROTH Safety Products GmbH, Im Ohl 14, 59757 Arnsberg, Germany.